

XHR310 Datasheet

DUAL-HEATED PRESSURE REGULATOR



Gas
 Liquid
 |
 Diaphragm
 Piston
 |
 Self-Venting
 Non-Venting
 |
 Max Inlet: 414 bar (6,000 psi)
 |
 Max Outlet: 35 bar (510 psi)
 |
 Cv 0.06



INTRODUCING THE XHR310...

The XHR310 is a diaphragm-sensed, dual-heated pressure regulator, designed to maintain sample liquids and gases in their vapour state.

Certified to ATEX directive 2014/34/EU, its two 100W heater cartridges are inserted in helical machined sheaths, which agitate the media to help with the heat transfer and analysis process. The steam-heated option replaces the heater cartridges with steam tubes.

The propriety PCB is easy to wire and incorporates a potentiometer to adjust the heater temperature setting, and independent channel isolation switches for liquid sampling.

Its electrical enclosure meets the requirements of IP66.

ATEX AND IECEX MARKINGS

The markings on the equipment includes:

- Ex II 2G
- Ex db IIC T3 Gb
- 40°C ≤ Ta ≤ 60°C
- CE 2183
- UKCA 0518

FEATURES AND BENEFITS

<p>1 2 X 100W HEATER CARTRIDGES</p> <p>Efficient heaters to maintain sample gases in their vapour state.</p>	<p>2 ATEX / IECEX CERTIFIED</p> <p>Certified for use in category 2 zone 1 hazardous areas. Certificates viewable on www.pressure-tech.com.</p>	<p>3 INCONEL® X750 DIAPHRAGM</p> <p>For ultimate strength and reliability on clean or corrosive applications.</p>	<p>4 OPTIONAL ENTRY POINTS FOR CABLE SUPPLY</p> <p>Power cable supply from left, right or bottom side to suit installation requirements.</p>
---	--	--	---

STANDARD MATERIALS OF CONSTRUCTION

PART	MATERIALS
Body and Bonnet	ASTM A479 316/316L Stainless Steel (UNS S31600/S31603)
Main Valve Pin	ASTM A479 316/316L Stainless Steel (UNS S31600/S31603)
Soft Seat	PEEK™ (450G)
Valve Spring	Inconel® X750 (UNS N07750)
Diaphragm	Inconel® X750 (UNS N07750)
O-Rings	FKM/FPM (Viton)
Electric Enclosure	Feraloy Iron Alloy

SPECIFICATION

Max. Rated Inlet Pressure	414 bar (6,000 psi)
Outlet Ranges	Up to 35 bar (510 psi)
Design Proof Pressure	150% max. working pressure
Seat Leakage	In accordance with ANSI/FCI 70-3
Weight	4.6kg (10.1lbs)

Note: Pressure regulator rating may be limited by connection type, Cv and/or seat material. Contact the office for specific pressure or temperature requirements.

NOTE: Product availability and specifications contained herein are subject to change without notice. Consult local distributor or factory for potential revisions and/or service related issues. Pressure Tech Ltd support with product selection recommendations only - it is the users responsibility to ensure the product is suitable for their specific application requirements.



PRESSURE TECH LTD
 Unit 24, Graphite Way, Hadfield, Glossop, Derbyshire, UK, SK13 1QH
 +44 (0)1457 899 307 | sales@pressure-tech.com | www.pressure-tech.com
DESIGNED, MANUFACTURED AND BUILT IN THE UK
 © 2025 Pressure Tech Ltd. All Rights Reserved.

090425

PAGE:
1 OF 4

XHR310 Datasheet

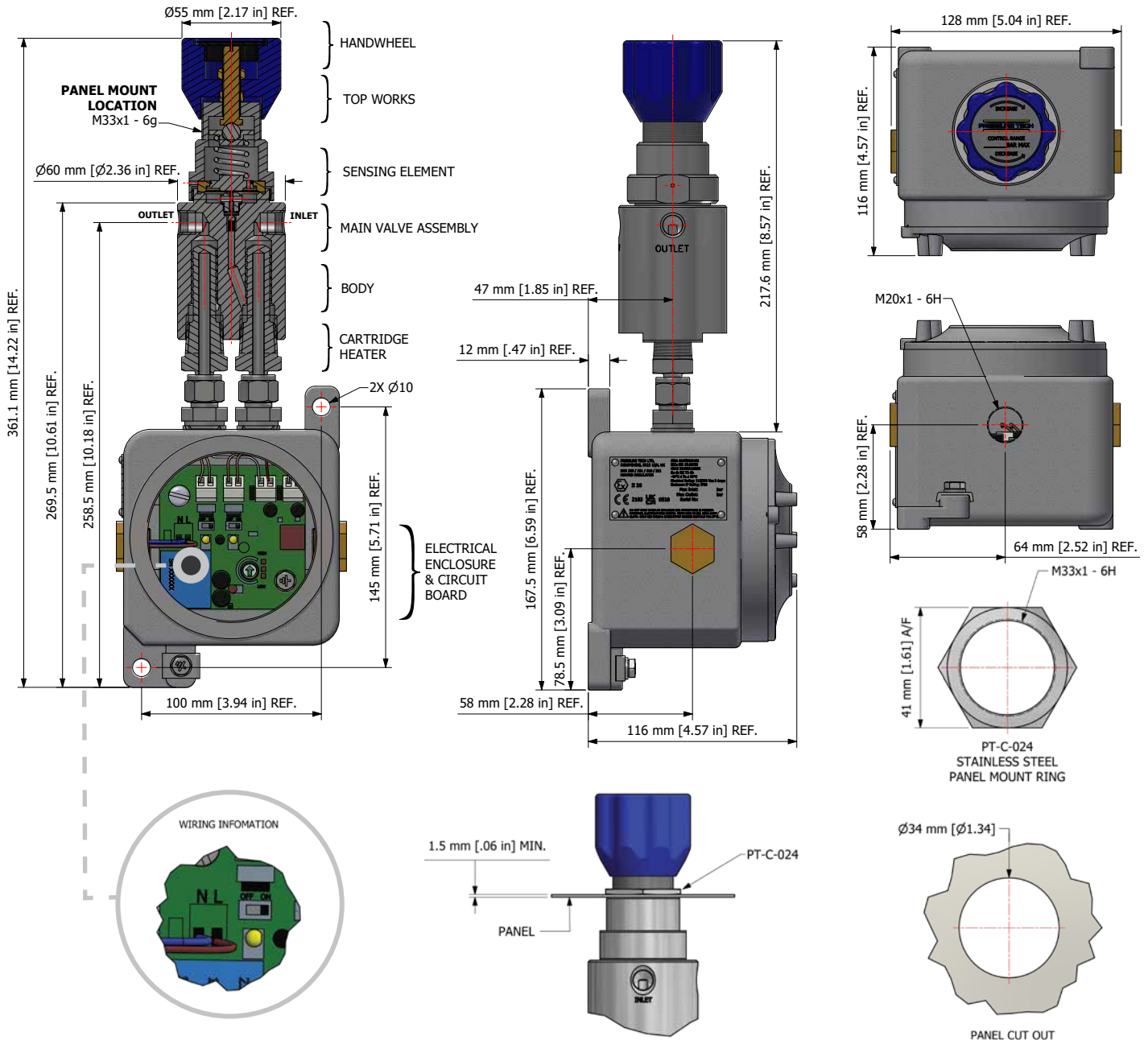
DUAL-HEATED PRESSURE REGULATOR



● Gas ● Liquid |
 ● Diaphragm ● Piston |
 ● Self-Venting ● Non-Venting |
 Max Inlet: 414 bar (6,000 psi) |
 Max Outlet: 35 bar (510 psi) |
 Cv 0.06

DRAWINGS AND INSTALLATION DIMENSIONS

Dimensions shown for 1/4" NPT option and standard configurations only - please contact the office for other options.



Note:
All gauge ports are 1/4" NPT as standard.

NOTE: Product availability and specifications contained herein are subject to change without notice. Consult local distributor or factory for potential revisions and/or service related issues. Pressure Tech Ltd support with product selection recommendations only - it is the users responsibility to ensure the product is suitable for their specific application requirements.



PRESSURE TECH LTD
 Unit 24, Graphite Way, Hadfield, Glossop, Derbyshire, UK, SK13 1QH
 +44 (0)1457 899 307 | sales@pressure-tech.com | www.pressure-tech.com
DESIGNED, MANUFACTURED AND BUILT IN THE UK
 © 2025 Pressure Tech Ltd. All Rights Reserved.

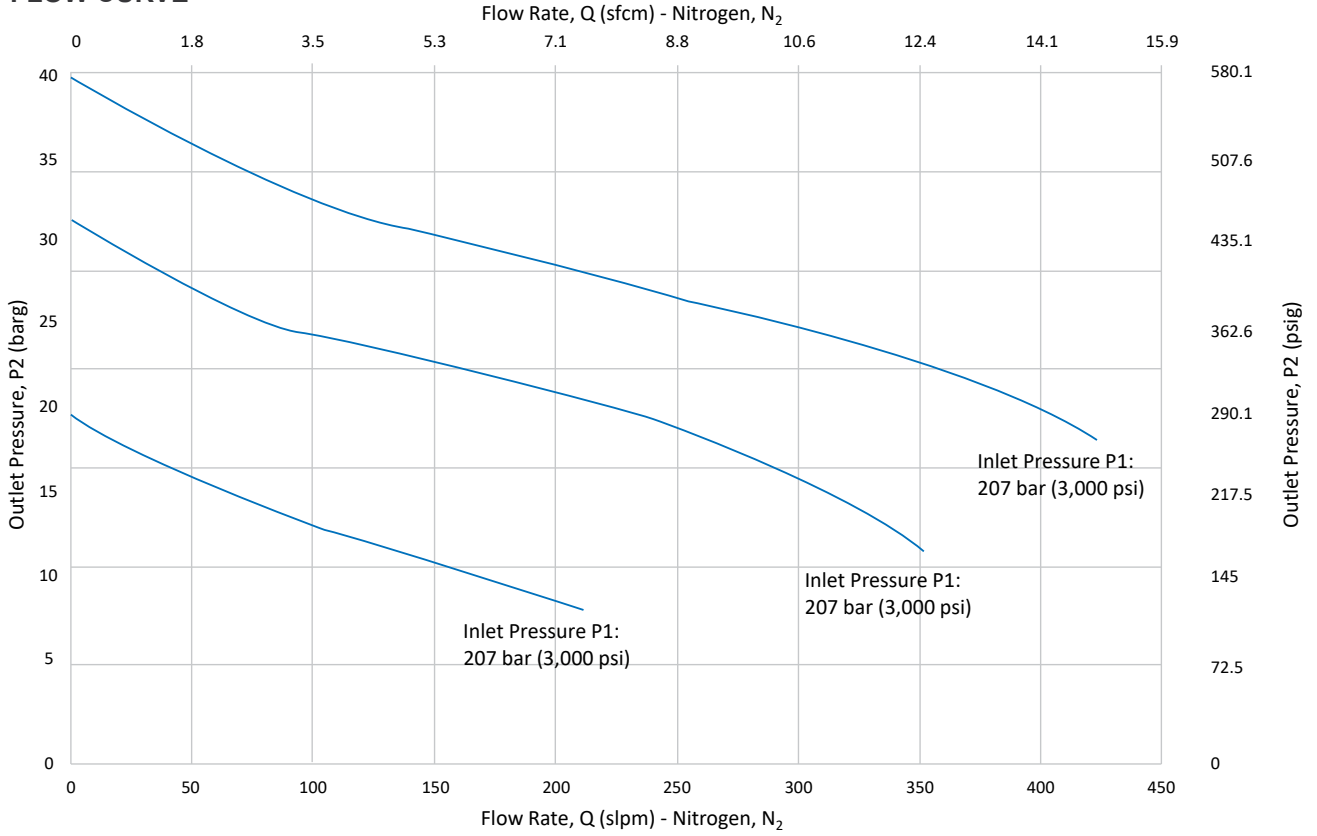
XHR310 Datasheet

DUAL-HEATED PRESSURE REGULATOR

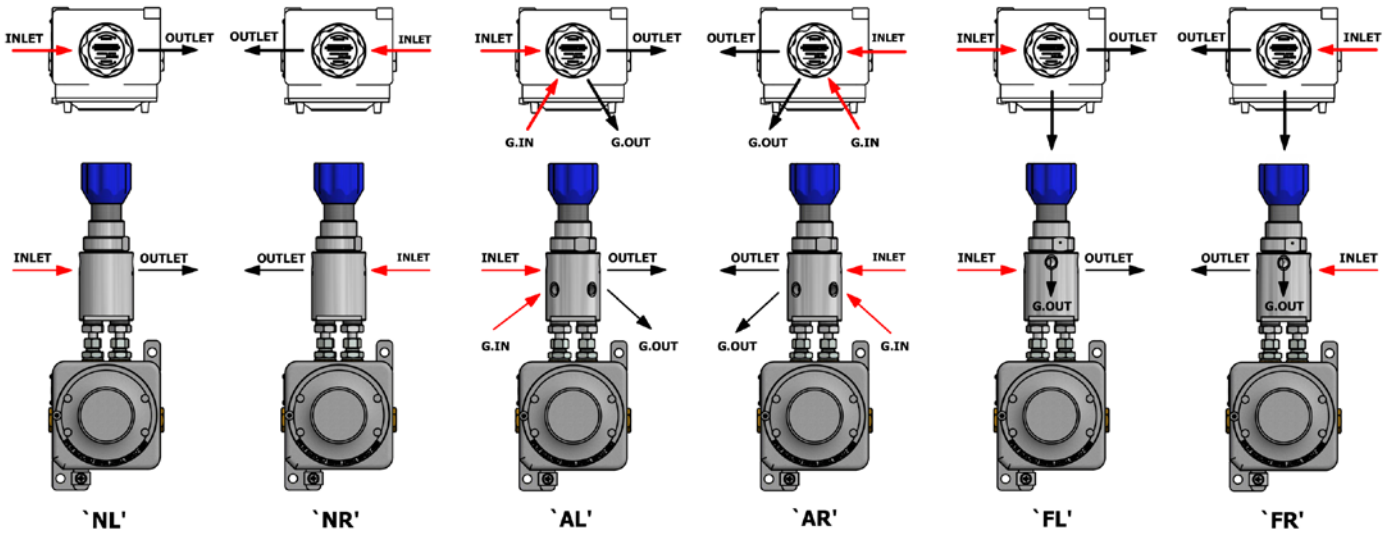


Gas
 Liquid
 |
 Diaphragm
 Piston
 |
 Self-Venting
 Non-Venting
 |
 Max Inlet: 414 bar (6,000 psi)
 |
 Max Outlet: 35 bar (510 psi)
 |
 Cv 0.06

FLOW CURVE



PORTING CONFIGURATIONS



Notes:

'AL' and 'AR': Gauge ports are not in the same axis as inlet and outlet ports
 Additional porting configurations are available - please contact the office for further information

NOTE: Product availability and specifications contained herein are subject to change without notice. Consult local distributor or factory for potential revisions and/or service related issues.
 Pressure Tech Ltd support with product selection recommendations only - it is the users responsibility to ensure the product is suitable for their specific application requirements.



PRESSURE TECH LTD
 Unit 24, Graphite Way, Hadfield, Glossop, Derbyshire, UK, SK13 1QH
 +44 (0)1457 899 307 | sales@pressure-tech.com | www.pressure-tech.com
DESIGNED, MANUFACTURED AND BUILT IN THE UK
 © 2025 Pressure Tech Ltd. All Rights Reserved.

090425

XHR310 Datasheet

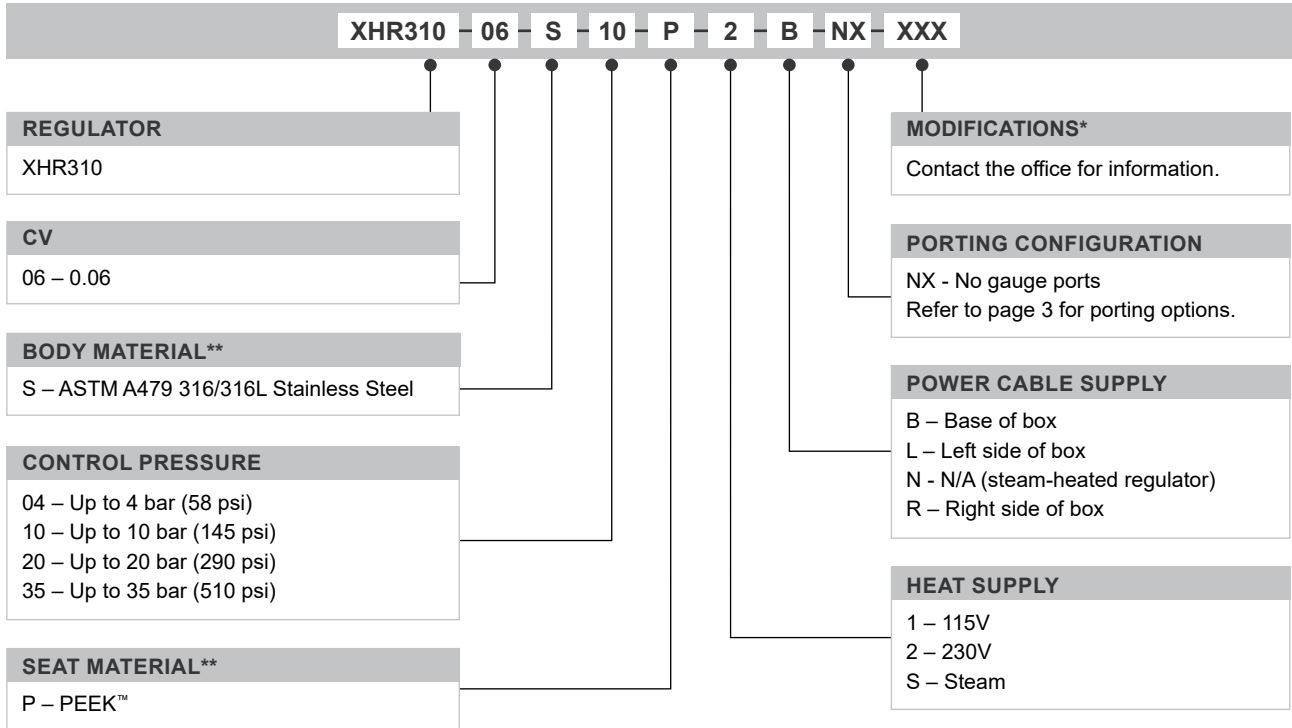
DUAL-HEATED PRESSURE REGULATOR



Gas
 Liquid
 Diaphragm
 Piston
 Self-Venting
 Non-Venting
 Max Inlet: 414 bar (6,000 psi)
 Max Outlet: 35 bar (510 psi)
 Cv 0.06

ORDERING INFORMATION

To build a Pressure Tech part number, simply combine the characters identified below in sequence:



OPTIONAL EXTRAS		
	PART NUMBER	DESCRIPTION
Service Kit	SRK-LF310-06-U-P-M2-V	PEEK™ seat and FKM/FPM seals
Panel Mounting Ring	PT-C-024	-

Note: Ancillary Equipment and additional Service Kit options also available.

TRADEMARKS: PEEK™ is a trademark of Victrex PLC
Inconel® is a registered trademark of Inco Alloys International

* Where applicable
** Other materials may be available

NOTE: Product availability and specifications contained herein are subject to change without notice. Consult local distributor or factory for potential revisions and/or service related issues.
Pressure Tech Ltd support with product selection recommendations only - it is the users responsibility to ensure the product is suitable for their specific application requirements.



PRESSURE TECH LTD
 Unit 24, Graphite Way, Hadfield, Glossop, Derbyshire, UK, SK13 1QH
 +44 (0)1457 899 307 | sales@pressure-tech.com | www.pressure-tech.com
DESIGNED, MANUFACTURED AND BUILT IN THE UK
 © 2025 Pressure Tech Ltd. All Rights Reserved.

090425